

Calbrite™

STAINLESS STEEL CONDUIT, CONDUIT FITTINGS & ACCESSORIES

Cal Conduit Products announces the latest additions to our Calbrite™ line of UL 6A and UL 514A and UL 514B listed and compliant stainless steel conduit, conduit fittings, and accessories.

Stainless steel is the highest quality and longest lasting UL-approved material available for use in corrosive environments or subject to harsh chemical treatments or washdown. No other material can match stainless steel for strength, corrosion resistance, fire resistance, ease of installation and durability.

Corrosion is costly - it damages equipment, causes down time and expensive maintenance and repairs. Calbrite™ stainless steel conduit can deliver the lowest life-cycle cost of any metallic conduit product available today.

Cal Conduit Products is a UL Listed manufacturer of conduit and conduit fittings. Our stainless steel conduit UL file number is E230584.

Our Los Angeles and Downey, California, and Hammond, Indiana facilities use the most timely and efficient methods to manufacture, stock and ship your orders.





UL listed manufacturer and distributor of metallic and non-metallic Electrical Conduit.

OUR METALLIC & NON-METALLIC PRODUCTS

- Electrical Conduit
- Conduit Fittings
- Lighted Bollards
- Industrial Piping Products
- Structural Steel Bending and Rolling

OUR CONDUIT PRODUCT LINES

- **Calbrite™** - Stainless Steel Conduit & Fittings
- **Calbond™** - PVC-Coated conduit fittings
- **Calduit™** - Steel Conduit & Fittings
- **Caluminum™** - Aluminium Conduit Fittings
- **CalPVC™** - PVC Conduit Fittings

OUR COMMITMENT TO PROVIDE THE BEST

- 24 to 72 hour turn-around time on production runs and specials
- 1 to 2 day shipping to most of the continental U.S. and Canada.
- Approved vendor of goods and services to
 - The Department of Defense
 - GSA
 - Public Utilities and Municipalities
 - Hundreds of corporate and OEM clients and customers

CAL CONDUIT'S QUALITY ASSURANCE

Our Quality Assurance program complies with the guidelines established by Underwriters Laboratories, ASTM and API and other industry standards.

OUR PHILOSOPHY:

Cal Conduit Products' customer service philosophy can be summed up in two words, "Service & Quality". We are dedicated to servicing the needs of our customers. We believe there is no substitute for direct personal communication. Our teams understand our customer's service needs and product requirements. We offer great quality products and we aggressively pursue faster and more efficient techniques to improve the cost and quality of those products. We recognize that to serve our customers best, and to be productive and profitable, we must adopt and master new technologies and innovations beyond the traditional methods of the electrical and industrial supply industry.



UL LISTED

Approval file number for ferrous electrical conduit: (UL) File Number E226472. Approval file number for Non-ferrous electrical conduit: (UL) File Number E230584 (Issue #26KT)



Look for our complete electrical catalog on GlobalSpec under "Electrical Conduit".



NATIONAL ASSOCIATION OF ELECTRICAL DISTRIBUTORS

ASSOCIATE MEMBER

Visit the websites of other manufacturing and distributing companies in the Cal Conduit Family

www.stainlessconduit.com, www.webendpipe.com, www.calpipebollards.com
www.pipenipple.com, www.pvc-conduitfittings.com



HAMMOND, IN



DOWNEY, CA



LOS ANGELES, CA

Cal Conduit Products' national network of sales representatives serves customers across the U.S.
 We manufacture and ship from three strategically located manufacturing and distributing facilities in
 California and Indiana totaling more than 300,000 square feet

Use of stainless steel electrical components continues to grow as electrical engineers, architects, building owners, manufacturing plants, specifiers and other decision makers recognize its superior anti-corrosion properties and strength advantages. Stainless steel offers superior corrosion resistance, strength in extreme environments, substantial hygienic attributes and modern appearance. Long service life and lower total lifecycle costs make it the ideal material for many industrial and commercial applications and environments.

CONTENTS

Stainless Steel Conduit Products		Flex Connectors	12
SS Conduit & Light Wall - Type 304, 316	5	SS Compression Fittings	12
SS Flex & Coated Flex Conduit	5	Stainless Steel Conduit Accessories	
SS EMT Conduit	5	Washers, Nuts & Screws	13
Nipples - Type 304, 316	5	2 - Hole Brackets	13
Elbows - Type 304, 316	6	Strut Clamps	14
Sweeps - Type 304, 316	6	Right Angle Clamps	14
Stainless Steel Conduit Fittings		Right Angle Beam Clamps	14
Conduit Bodies	7	Beam Clamps	14
Couplings	8	Parallel Clamps	14
Line Terminator Hubs	9	Conduit Hangers	14
EMT Compression Fittings	9	Straps - 1 & 2 - Hole	14
Junction Boxes	10	U-Bolts	15
Junction Box Plates & Covers	11	Miscellaneous	15

BENEFITS OF STAINLESS STEEL

Long Term Value

- Because of its toughness and lower maintenance cost, the total life cycle cost of stainless steel conduit and fittings is often the best value over other UL approved materials. Properly installed stainless steel can remain effective against corrosion for up to fifty years.

Impact Resistance

- Calbrite™ stainless conduit has virtually identical tensile and ductile properties as rigid steel and is five to six times stronger than aluminum. It is more resistant to corrosion, heat, impact, or other damage than any other UL approved conduit material.

Aesthetic Appearance

- Calbrite™ stainless conduit and fittings are polished to a bright, easily maintained finish that is modern, attractive, easy to clean and that also enhances the surface's resistance to pitting and bacterial corrosion.

Hygiene

Stainless steel is used the world over wherever there are high demands for cleanliness and safety. Stainless steel is the first choice for applications in hospitals, kitchens, clean rooms, potable water or beverage plants, food processing plants, and other facilities.

Corrosion Resistance

- Stainless steel oxidizes to resist corrosion. Even when scratched the exposed metal 'self-heals', oxidizing over the abrasion to protect against further corrosion. Both type 304 and type 316 stainless steel furnish excellent resistance to a wide variety of corrosives at extreme temperatures and in most atmospheric and industrial environments.

Fire & Heat Resistance

- Stainless steel does not lose either structural or anti-corrosive properties in temperatures ranging from cryogenic up to hundreds of degrees. No UL approved material is as effective or as strong at such temperatures. Unlike PVC-coated products, stainless steel conduit does not burn and emit dangerous smoke and carcinogens.

Ease of Fabrication

- Calbrite stainless steel conduit and fittings function in exactly the same way as any other metallic conduit, and require no special tools or techniques for installation. There are none of the labor-intensive procedures that come with PVC-coated installations, nor the complicated maintenance and repair procedures.

HAMMOND, IN
 2207 165th Street
 Hammond, IN 46320
 800 536-2248
 219 844-6800
 219 844-6884 fax

DOWNEY, CA
 Corporate Headquarters
 9650 Washburn Road
 Downey, CA 90241
 562 803-4388
 800-225-7473
 562 803-6975 fax

LOS ANGELES, CA
 515 E. 88th Place
 Los Angeles, CA 9003
 800-225-7473

OUR Calbrite™ STAINLESS PRODUCTS CAN BE FOUND ON THE WEB AT
www.stainlessconduit.com

Visit web sites of our other electrical conduit lines in the Cal Conduit Products Family

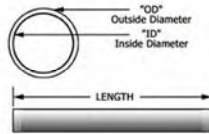
Stainless Conduit



SS CONDUIT - 10' and 5' Lengths with coupling

SS LIGHT WALL CONDUIT

Nominal Size	Diameters		Ft/ wt.	10' Length w/coupling		5' Length w/coupling		10' Length Light Wall			Ft/ wt.	
	Trade	Metric		O.D.	I.D.	Type 304	Type 316	Type 304	Type 316	I.D.		Type 304
1/2"	16	0.84"	0.62"	0.82	S40510CT00	S60510CT00	S40505CT00	S60505CT00	0.670	S50510CT00	S70510CT00	0.671
3/4"	21	1.05"	0.82"	1.09	S40710CT00	S60710CT00	S40705CT00	S60705CT00	0.884	S50710CT00	S70710CT00	0.857
1"	27	1.32"	1.05"	1.61	S41010CT00	S61010CT00	S41005CT00	S61005CT00	1.097	S51010CT00	S71010CT00	1.400
1 1/4"	35	1.66"	1.38"	2.18	S41210CT00	S61210CT00	S41205CT00	S61205CT00	N/A			
1 1/2"	41	1.90"	1.61"	2.63	S41510CT00	S61510CT00	S41505CT00	S61505CT00	1.682	S51510CT00	S71510CT00	2.090
2"	53	2.38"	2.07"	3.50	S42010CT00	S62010CT00	S42005CT00	S62005CT00	2.157	S52010CT00	S72010CT00	2.640
2 1/2"	63	2.88"	2.47"	5.59	S42510CT00	S62510CT00	S42505CT00	S62505CT00		TBA	TBA	
3"	78	3.50"	3.07"	7.27	S43010CT00	S63010CT00	S43005CT00	S63005CT00		TBA	TBA	
3 1/2"	91	4.00"	3.55"	8.80	S43510CT00	S63510CT00	S43505CT00	S63505CT00		TBA	TBA	
4"	103	4.50"	4.03"	10.08	S44010CT00	S64010CT00	S44005CT00	S64005CT00		TBA	TBA	



CAL CONDUIT PRODUCTS IS THE EXCLUSIVE MANUFACTURER OF STAINLESS STEEL EMT CONDUIT!

SS COATED FLEX CONDUIT - 25' Length

Nominal Size	Diameters			25'
	Trade	Metric	Bend	
1/2"	15	0.84 0.61	4 1/2"	S40500CTFC
3/4"	20	1.05 0.79	6"	S40700CTFC
1"	25	1.30 1.01	10"	S41000CTFC
1 1/2"	40	1.85 1.52	12"	S41500CTFC



SS EMT CONDUIT - 10' and 5' Lengths

Nominal Size	O.D.	I.D.	Ft/ wt.	10' length	5' length
1/2"	0.71"	0.62"	0.30	S10510CT00	S10505CT00
3/4"	0.93"	0.82"	0.46	S10710CT00	S10705CT00
1"	1.17"	1.06"	0.67	S11010CT00	S11005CT00
1-1/4"	1.51"	1.40"	1.01	S11210CT00	S11205CT00
1-1/2"	1.74"	1.61"	1.16	S11510CT00	S11505CT00
2"	2.20"	2.09"	1.48	S12010CT00	S12005CT00

SS FLEX CONDUIT - 25' Length

Nominal Size	Diameters			25'
	Trade	Metric	Bend	
1/2"	15	0.74 0.61	4"	S40500CTFX
3/4"	20	0.96 0.79	4 1/2"	S40700CTFX
1"	25	1.16 1.01	6"	S41000CTFX
1 1/2"	40	1.75 1.53	9"	S41500CTFX



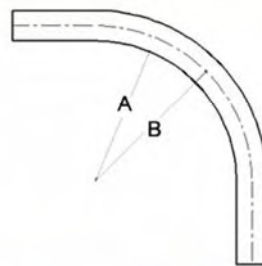
Stainless Nipples

SS NIPPLES - Type 304 & 316

Diameter	Size - In	Type	1/2"	3/4"	1"	1-1/4"	1-1/2"	2"	2-1/2"	3"	4"
			Type	Type	Type	Type	Type	Type	Type	Type	Type
Close	304	S405CLCN00	S407CLCN00	S410CLCN00	S412CLCN00	S415CLCN00	S420CLCN00	S425CLCN00	S430CLCN00	S440CLCN00	
	316	S605CLCN00	S607CLCN00	S610CLCN00	S612CLCN00	S615CLCN00	S620CLCN00	S625CLCN00	S630CLCN00	S640CLCN00	
1-1/2"	304	S40515CN00	S40715CN00								
	316	S60515CN00	S60715CN00								
2	304	S40520CN00	S40720CN00	S41020CN00	S41220CN00	S41520CN00					
	316	S60520CN00	S60720CN00	S61020CN00	S61220CN00	S61520CN00					
2-1/2	304	S40525CN00	S40725CN00	S41025CN00	S41225CN00	S41525CN00	S42025CN00				
	316	S60525CN00	S60725CN00	S61025CN00	S61225CN00	S61525CN00	S62025CN00				
3	304	S40530CN00	S40730CN00	S41030CN00	S41230CN00	S41530CN00	S42030CN00	S42530CN00	S43030CN00		
	316	S60530CN00	S60730CN00	S61030CN00	S61230CN00	S61530CN00	S62030CN00	S62530CN00	S63030CN00		
3-1/2	304	S40535CN00	S40735CN00	S41035CN00	S41235CN00	S41535CN00	S42035CN00	S42535CN00	S43035CN00	S44035CN00	
	316	S60535CN00	S60735CN00	S61035CN00	S61235CN00	S61535CN00	S62035CN00	S62535CN00	S63035CN00	S64035CN00	
4	304	S40540CN00	S40740CN00	S41040CN00	S41240CN00	S41540CN00	S42040CN00	S42540CN00	S43040CN00	S44040CN00	
	316	S60540CN00	S60740CN00	S61040CN00	S61240CN00	S61540CN00	S62040CN00	S62540CN00	S63040CN00	S64040CN00	
5	304	S40550CN00	S40750CN00	S41050CN00	S41250CN00	S41550CN00	S42050CN00	S42550CN00	S43050CN00	S44050CN00	
	316	S60550CN00	S60750CN00	S61050CN00	S61250CN00	S61550CN00	S62050CN00	S62550CN00	S63050CN00	S64050CN00	
6	304	S40560CN00	S40760CN00	S41060CN00	S41260CN00	S41560CN00	S42060CN00	S42560CN00	S43060CN00	S44060CN00	
	316	S60560CN00	S60760CN00	S61060CN00	S61260CN00	S61560CN00	S62060CN00	S62560CN00	S63060CN00	S64060CN00	
8	304	S40580CN00	S40780CN00	S41080CN00	S41280CN00	S41580CN00	S42080CN00	S42580CN00	S43080CN00	S44080CN00	
	316	S60580CN00	S60780CN00	S61080CN00	S61280CN00	S61580CN00	S62080CN00	S62580CN00	S63080CN00	S64080CN00	
10	304	S40510CN00	S40710CN00	S41010CN00	S41210CN00	S41510CN00	S42010CN00	S42510CN00	S43010CN00	S44010CN00	
	316	S60510CN00	S60710CN00	S61010CN00	S61210CN00	S61510CN00	S62010CN00	S62510CN00	S63010CN00	S64010CN00	
12	304	S40512CN00	S40712CN00	S41012CN00	S41212CN00	S41512CN00	S42012CN00	S42512CN00	S43012CN00	S44012CN00	
	316	S60512CN00	S60712CN00	S61012CN00	S61212CN00	S61512CN00	S62012CN00	S62512CN00	S63012CN00	S64012CN00	

CONDUIT PRODUCTS

Stainless Elbows



STANDARD RADIUS ELBOWS 90° - Type 304 & 316 in Standard and Light Wall

Trade Size - In	Metric Size	Outside Diameter	Inside Diameter	A Inches	B Inches	Type 304	Type 316	Type 304 Light Wall	Type 316 Light Wall
1/2"	16	0.920	0.632	3.79	4.25	S40590EL00	S60590EL00	S50590EL00	S70590EL00
3/4"	21	1.130	0.836	3.94	4.50	S40790EL00	S60790EL00	S50790EL00	S70790EL00
1"	27	1.395	1.063	5.05	5.75	S41090EL00	S61090EL00	S51090EL00	S71090EL00
1 1/4"	35	1.740	1.394	6.38	7.25	S41290EL00	S61290EL00	S51290EL00	S71290EL00
1 1/2"	41	1.980	1.624	7.26	8.25	S41590EL00	S61590EL00	S51590EL00	S71590EL00
2"	53	2.455	2.083	8.27	9.50	S42090EL00	S62090EL00	S52090EL00	S72090EL00
2 1/2"	63	2.955	2.489	9.02	10.50	S42590EL00	S62590EL00	S52590EL00	S72590EL00
3"	78	3.580	3.080	11.21	13.00	S43090EL00	S63090EL00	S53090EL00	S73090EL00
4"	103	4.580	4.050	13.71	16.00	S44090EL00	S64090EL00	S54090EL00	S74090EL00
5"	129	5.643	5.073	21.18	24.00	S45090EL00	S65090EL00		
6"	155	6.705	6.093	16.65	30.00	S46090EL00	S66090EL00		

STANDARD RADIUS ELBOWS 45° - Type 304 & 316 in Standard and Light Wall

Trade Size - In	Metric Size	Outside Diameter	Inside Diameter	A Inches	B Inches	Type 304	Type 316	Type 304 Light Wall	Type 316 Light Wall
1/2"	16	0.920	0.632	3.79	4.25	S40545EL00	S60545EL00	S50545EL00	S70545EL00
3/4"	21	1.130	0.836	3.94	4.50	S40745EL00	S60745EL00	S50745EL00	S70745EL00
1"	27	1.395	1.063	5.05	5.75	S41045EL00	S61045EL00	S51045EL00	S71045EL00
1 1/4"	35	1.740	1.394	6.38	7.25	S41245EL00	S61245EL00	S51245EL00	S71245EL00
1 1/2"	41	1.980	1.624	7.26	8.25	S41545EL00	S61545EL00	S51545EL00	S71545EL00
2"	53	2.455	2.083	8.27	9.50	S42045EL00	S62045EL00	S52045EL00	S72045EL00
2 1/2"	63	2.955	2.489	9.02	10.50	S42545EL00	S62545EL00	S52545EL00	S72545EL00
3"	78	3.580	3.080	11.21	13.00	S43045EL00	S63045EL00	S53045EL00	S73045EL00
4"	103	4.580	4.050	13.71	16.00	S44045EL00	S64045EL00	S54045EL00	S74045EL00

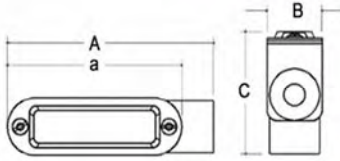
Stainless Sweeps

LARGE RADIUS ELBOWS - Type 304 & 316

A-Radius Inches	Type	1"	1-1/4"	1-1/2"	2"	2-1/2"	3"	4"
12	304	S41012SW90	S41212SW90	S41512SW90	S42012SW90			
	316	S61012SW90	S61212SW90	S61512SW90	S62012SW90			
15	304	S41015SW90	S41215SW90	S41515SW90	S42015SW90			
	316	S61015SW90	S61215SW90	S61515SW90	S62015SW90			
18	304	S41018SW90	S41218SW90	S41518SW90	S42018SW90	S42518SW90	S43018SW90	
	316	S61018SW90	S61218SW90	S61518SW90	S62018SW90	S62518SW90	S63018SW90	
24	304	S41024SW90	S41224SW90	S41524SW90	S42024SW90	S42524SW90	S43024SW90	S44024SW90
	316	S61024SW90	S61224SW90	S61524SW90	S62024SW90	S62524SW90	S63024SW90	S64024SW90
30	304	S41030SW90	S41230SW90	S41530SW90	S42030SW90	S42530SW90	S43030SW90	S44030SW90
	316	S61030SW90	S61230SW90	S61530SW90	S62030SW90	S62530SW90	S63030SW90	S64030SW90
36	304	S41036SW90	S41236SW90	S41536SW90	S42036SW90	S42536SW90	S43036SW90	S44036SW90
	316	S61036SW90	S61236SW90	S61536SW90	S62036SW90	S62536SW90	S63036SW90	S64036SW90
42	304	S41042SW90	S41242SW90	S41542SW90	S42042SW90	S42542SW90	S43042SW90	S44042SW90
	316	S61042SW90	S61242SW90	S61542SW90	S62042SW90	S62542SW90	S63042SW90	S64042SW90
48	304	S41048SW90	S41248SW90	S41548SW90	S42048SW90	S42548SW90	S43048SW90	S44048SW90
	316	S61048SW90	S61248SW90	S61548SW90	S62048SW90	S62548SW90	S63048SW90	S64048SW90
60	304	S41060SW90	S41260SW90	S41560SW90	S42060SW90	S42560SW90	S43060SW90	S44060SW90
	316	S61060SW90	S61260SW90	S61560SW90	S62060SW90	S62560SW90	S63060SW90	S64060SW90

Stainless Conduit Bodies

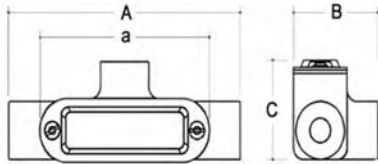
LB BODY



Nominal Size	Cat Number	A	B	C	a
1/2"	S60500LB00	4.96	1.33	2.33	4.34
3/4"	S60700LB00	5.59	1.56	2.57	4.95
1"	S61000LB00	6.50	1.74	2.95	5.68
1-1/2"	S61500LB00	8.90	2.53	3.96	7.86
2"	S62000LB00	11.20	3.48	4.29	10.00
2-1/2"	S62500LB00				
3"	S63000LB00				
4"	S64000LB00				



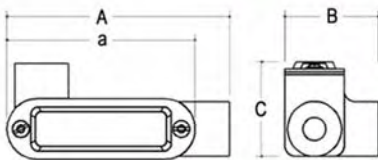
T BODY



Nominal Size	Cat Number	A	B	C	a
1/2"	S60500TE00	5.69	2.21	2.03	4.34
3/4"	S60700TE00	6.28	2.39	2.30	4.96
1"	S61000TE00	7.33	2.68	2.57	5.68
1-1/2"	S61500TE00	10.50	3.66	3.00	7.86
2"	S62000TE00	12.30	4.66	3.80	10.00
2-1/2"	S62500TE00				
3"	S63000TE00				
4"	S64000TE00				



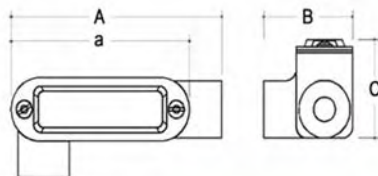
LL BODY



Nominal Size	Cat Number	A	B	C	a
1/2"	S60500LL00	4.96	2.20	1.72	4.36
3/4"	S60700LL00	5.59	2.32	1.95	4.95
1"	S61000LL00	6.50	2.62	2.22	5.68
1-1/2"	S61500LL00	8.90	3.76	3.04	7.86
2"	S62000LL00	11.20	4.73	3.86	10.00



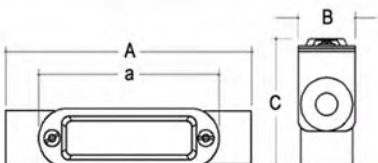
LR BODY



Nominal Size	Cat Number	A	B	C	a
1/2"	S60500LR00	4.96	2.20	1.72	4.36
3/4"	S60700LR00	5.59	2.32	1.95	4.95
1"	S61000LR00	6.50	2.62	2.22	5.68
1-1/2"	S61500LR00	8.90	3.76	3.04	7.86
2"	S62000LR00	11.20	4.73	3.86	10.00



TB BODY

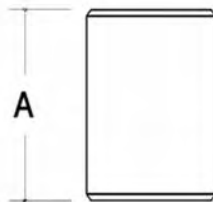


Nominal Size	Cat Number	A	B	C	a
1/2"	S60500TB00	5.69	1.33	2.49	4.34
3/4"	S60700TB00	6.28	1.56	2.67	4.96
1"	S61000TB00	7.33	1.74	3.07	5.68
1-1/2"	S61500TB00	10.50	2.53	4.32	7.86
2"	S62000TB00	12.30	3.48	4.68	10.00



Stainless Couplings

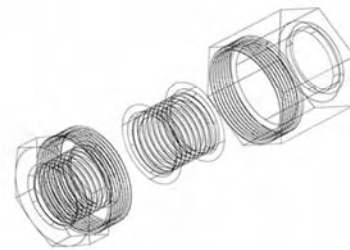
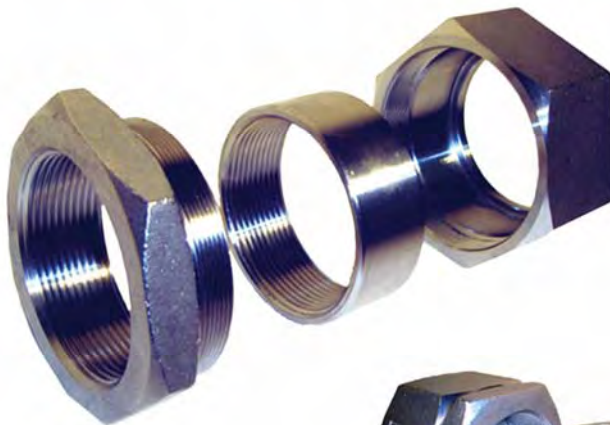
Type 316



Couplings

Nominal Size	Metric	Cat Number	A
1/2"	16	S60500CP00	1.625
3/4"	21	S60700CP00	1.64
1"	27	S61000CP00	1.938
1-1/4"	35	S61200CP00	2.031
1-1/2"	41	S61500CP00	2.063
2"	53	S62000CP00	2.125
2-1/2"	63	S62500CP00	3.188
3"	78	S63000CP00	3.313
4"	103	S64000CP00	3.516

3 Piece Stainless Coupling (Union)

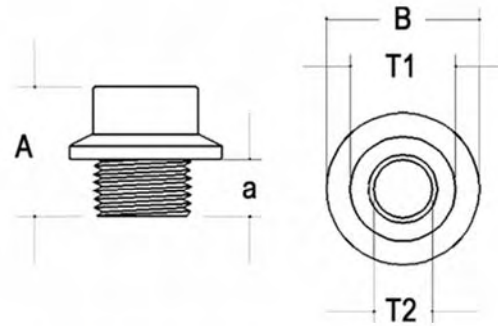


3- Piece Coupling

Nominal Size	Metric Size	Cat Number
1/2"	16	S605003U00
3/4"	21	S607003U00
1"	27	S610003U00
1-1/2"	41	S615003U00
2"	53	S620003U00

Stainless Line Terminator Hubs

Type 316



SS LT Hubs

Nominal Size	Cat Number	A	B	a	T1	T2
1/2"	S60500LT00	1.375	1.625	0.625	.5 NPS	.5 NPT
3/4"	S60700LT00	1.375	1.875	0.625	.75 NPS	.75 NPT
1"	S61000LT00	1.625	2.125	0.625	1 NPS	1 NPT
1-1/4"	S61200LT00	1.875	2.5	0.875	1.25 NPS	1.25 NPT
1-1/2"	S61500LT00	1.875	2.625	0.875	1.5 NPS	1.5 NPT
2"	S62000LT00	2.125	3.125	0.875	2 NPS	2 NPT
2-1/2"	S62500LT00	2.25	3.625	1	2.5 NPS	2.5 NPT
3"	S63000LT00	2.5	4.375	1	3 NPS	3 NPT
4"	S64000LT00	2.875	5.5	1.125	4 NPS	4 NPT



Stainless EMT Compression Fittings

SS EMT Male Compression Fitting

Nominal Size	Metric Size	Cat Number
1/2"	16	S20500MC00
3/4"	21	S20700MC00
1"	27	S21000MC00
1-1/4"	35	S21200MC00
1-1/2"	41	S21500MC00
2"	53	S22000MC00



SS EMT Compression Union

Nominal Size	Metric Size	Cat Number
1/2"	16	S20500CC00
3/4"	21	S20700CC00
1"	27	S21000CC00
1-1/4"	35	S21200CC00
1-1/2"	41	S21500CC00
2"	53	S22000CC00

Junction Boxes



FS Single Gang Box
3/4" #S60700FS00

FD Single Gang Box
3/4" #S60700FD00



FDC Single Gang Box
3/4" #S60700FDCS

FDC Double Gang Box
3/4" #S60700FDCD



Junction Box Plates

Toggle Switch Plates



Two Toggle Switches
(2 Gang)
#S6072TPLTD

One Toggle Switch
(1 Gang)
#S6071TPLTS



One Toggle Switch
and One GFCI
Receptacle (2 Gang)
#S607TGPLTD

Duplex Receptacle Plates

Two Duplex
Receptacles
(2 Gang)
#S6072DPLTD



Two Duplex Receptacles
(1 Gang)
#S6072DPLTS

Combination Switch/Receptacle Plates



One Toggle Switch
and One Duplex
Receptacle
(2 Gang)
#S607TDPLTD

Circular Outlet Wall Plates



One 60-amp Straight-Blade
Device (2 Gang)
#S60772TPLTD

One 30- or 50-amp
Straight-Blade Device
(2 Gang)
#S6073BPLTD

Ground Fault Circuit Interrupter (GFCI) Receptacle Plates



Two GFCI Receptacles
(2 Gang)
#S6072GPLTD

One GFCI Receptacle
(1 Gang)
#S6071GPLTS

Two Device
(2 Gang)
#S607BLPLTD

Blank Plates



Single Device (1 Gang)
#S607BLPLTS

One 30- or 50-amp
Straight-Blade Device
(1 Gang)
#S6073BPLTS

One 20- or 30-amp
Turn-Lock Device (1 Gang)
#S6072TPLTS

One 15-amp Turn-Lock or 20-amp
Straight-Blade Device (1 Gang)
#S6071BPLTS

Single Device 1-gang Covers



Blank
#S60700CVRS

Duplex Receptacle (Horizontal)
#S607HDCVRS

Duplex Receptacle
(Vertical)
#S607VDCVRS

GFCI Receptacle
(Vertical)
#S607VGCVRS

Toggle Switch
(Vertical)
#S6071TCVRS



Two Device 2-gang Covers



Blank
#S60700CVRD

Two Toggle Switches
(Vertical)
#S6072TCVRD

Junction Box Covers

Single Device Locking 1-gang Covers



Duplex Receptacle (Horizontal)
#S607HDCVLS

GFCI Receptacle
(Vertical)
#S607VGCVLS

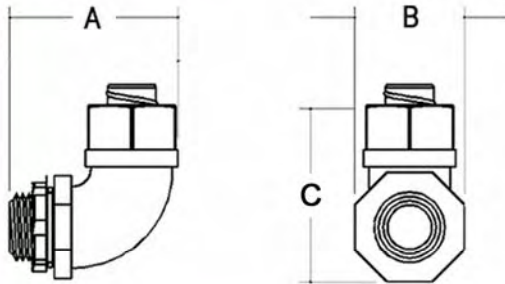
Toggle Switch (Horizontal)
#S6071TCVLS

Stainless Flexible Connectors

Nominal Size	Cat Number	A	B	C
1/2"	S60500FC90	2.25	0.50	2.25
3/4"	S60700FC90	2.50	0.75	2.25
1"	S61000FC90	3.00	1.00	3.00
1-1/2"	S61500FC90	3.50	1.50	3.50

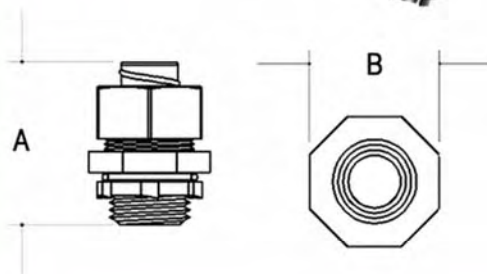
*Male 45° Elbow FLEX CONNECTOR available in 1/2" (S60500FC45) & 3/4" (S60700FC45) only.

FLEX CONNECTOR
Male 90° Elbow



Nominal Size	Cat Number	A	B
1/2"	S60500FCS0	1.13	1.50
3/4"	S60700FCS0	1.38	1.50
1"	S61000FCS0	1.63	1.75
1-1/2"	S61500FCS0	1.50	2.00

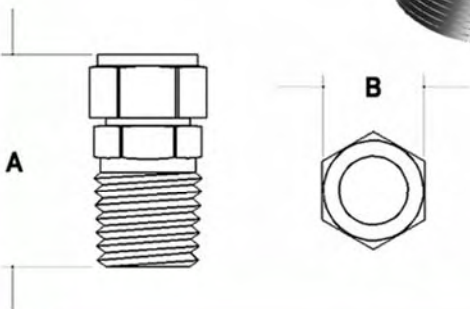
FLEX CONNECTOR
Male Straight



Stainless Compression Fittings

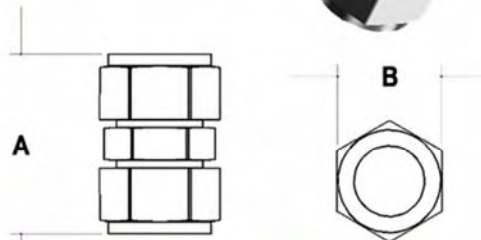
Nominal Size	Cat Number	A	B
1/2"	S60500MC00	1.50	1.20
3/4"	S60700MC00	1.75	1.45
1"	S61000MC00	1.96	1.75
1-1/2"	S61500MC00	2.33	2.52
2"	S62000MC00	2.48	3.09

MALE COMPRESSION CONNECTOR



Nominal Size	Cat Number	A	B
1/2"	S60500CC00	1.80	1.20
3/4"	S60700CC00	1.95	1.45
1"	S61000CC00	2.10	1.75
1-1/2"	S61500CC00	2.56	2.36
2"	S62000CC00	2.70	2.89

COMPRESSION UNION



Stainless Washers, Nuts & Screws

Type 316

Standard Washers

Nominal Size	Cat Number
Various	S60000WA00



Channel Nuts with Spring

Nominal Size	Cat Number
1/4"-20"	S60000CN11
3/8"-16"	S60000CN31
1/2"-13"	S60000CN41
5/8"-11"	S60000CN51
3/4"-10"	S60000CN61



Lock Washers

Nominal Size	Cat Number
Various	S60000LW00

Hex Head Cap Screws

Nominal Size	Cat Number
Various	S60000HC00



Lock Nuts

Nominal Size	Cat Number
1/2"	S60500LN00
3/4"	S60700LN00
1"	S61000LN00
1-1/4"	S61200LN00
1-1/2"	S61500LN00
2"	S62000LN00



Hex Nuts

Nominal Size	Cat Number
Various	S60000HN00



Stainless Brackets

Type 316

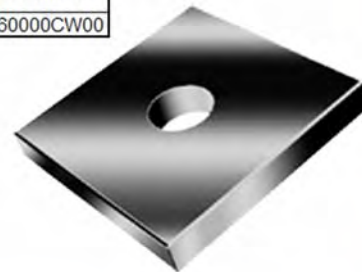
2 - Hole Brackets

Nominal Size	Cat Number
Various	S600002B00



Square Washers

Nominal Size	Cat Number
Various	S60000CW00



Stainless Clamps

Type 316

Strut Clamps

Nominal Size	Cat Number
1/2"	S60500SC00
3/4"	S60700SC00
1"	S61000SC00
1-1/4"	S61200SC00
1-1/2"	S61500SC00
2"	S62000SC00
2-1/2"	S62500SC00
3"	S63000SC00
3-1/2"	S63500SC00
4"	S64000SC00
5"	S65000SC00
6"	S66000SC00
8"	S68000SC00



Right Angle Clamp

Nominal Size	Cat Number
1/2"	S60500RA00
3/4"	S60700RA00
1"	S61000RA00
1-1/4"	S61200RA00
1-1/2"	S61500RA00
2"	S62000RA00
2-1/2"	S62500RA00
3"	S63000RA00
3-1/2"	S63500RA00
4"	S64000RA00



Parallel Clamp

Nominal Size	Cat Number
3/4"	S60700PC00
1"	S61000PC00

Right Angle Beam Clamp

Nominal Size	Cat Number
3/8" - 16"	S60000RC00



Beam Clamp

Nominal Size	Cat Number
1/4 - 20	S60000BC01
3/8 - 16	S60000BC03
1/2 - 13	S60000BC04



Conduit Hanger (mini-style)

Nominal Size	Cat Number
1/2"	S60500MH00
3/4"	S60700MH00
1"	S61000MH00
1-1/4"	S61200MH00
1-1/2"	S61500MH00
2"	S62000MH00

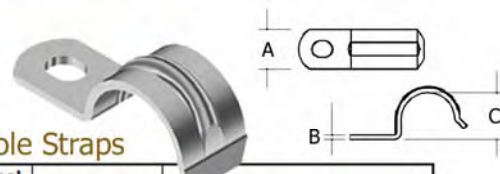
Stainless Straps

Type 316



2 - Hole Straps

Nominal Size	Cat Number	A	B	C	D
1/2"	S605002S00	4.1	1.3	0.84	0.437
3/4"	S607002S00	4.3	1.3	1.05	0.437
1"	S610002S00	4.7	1.3	1.3	0.437
1-1/4"	S612002S00	5.1	1.3	1.66	0.437
1-1/2"	S615002S00	5.5	1.3	1.9	0.437
2"	S620002S00	6	1.3	2.37	0.437
2-1/2"	S625002S00	6.5	1.3	2.874	0.437
3"	S630002S00	7.1	1.3	3.5	0.437
3-1/2"	S635002S00	8	1.3	4	0.437
4"	S640002S00	8.6	1.5	4.5	0.542



1 - Hole Straps

Nominal Size	Cat Number	A	B	C
1/2"	S605001S00	0.625	0.075	0.84
3/4"	S607001S00	0.75	0.09	1.05
1"	S610001S00	0.875	0.09	1.3
1-1/4"	S612001S00	0.875	0.1	1.66
1-1/2"	S615001S00	1	0.125	1.9
2"	S620001S00	1.125	0.125	2.37
2-1/2"	S625001S00	1.25	0.15	2.874
3"	S630001S00	1.25	0.15	3.5
3-1/2"	S635001S00	1.25	0.18	4
4"	S640001S00	1.25	0.18	4.5

Stainless U-Bolts

Type 316



Square Channel U-Bolt

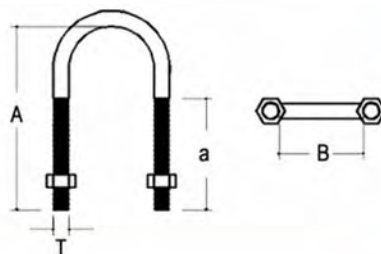
Nominal Size	Cat Number
Various	S60000SB00

Standard U-Bolt

Nominal Size	Cat Number	A	B	T	a
1/2"	S60500UB00	3.22	0.94	1/4 - 20	2.5
3/4"	S60700UB00	3.31	1.13	1/4 - 20	2.5
1"	S61000UB00	3.44	1.38	1/4 - 20	2.5
1-1/4"	S61200UB00	3.72	1.69	3/8 - 16	2.5
1-1/2"	S61500UB00	4.00	2.00	3/8 - 16	2.5
2"	S62000UB00	4.47	2.44	3/8 - 16	2.5
2-1/2"	S62500UB00	5.22	2.94	1/2 - 13	3
3"	S63000UB00	5.78	3.56	1/2 - 13	3
3-1/2"	S63500UB00	6.22	4.06	1/2 - 13	3
4"	S64000UB00	6.78	4.56	1/2 - 13	3

U-Bolt Plate

Nominal Size	Cat Number
Various	S60000UP00



Miscellaneous

Type 316

Counter-sunk Hex Head Plug

Nominal Size	Cat Number	a
1/2"	S60500CSHP	0.375
3/4"	S60700CSHP	0.563
1"	S61000CSHP	0.625
1-1/4"	S61200CSHP	0.75
1-1/2"	S61500CSHP	1
2"	S62000CSHP	1



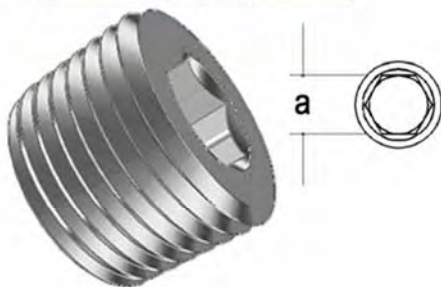
Rod Coupling

Nominal Size	Cat Number
1/4"	S60200RC00
3/8"	S60300RC00
1/2"	S60500RC00



Chase Nipple

Nominal Size	Cat Number
1/2"	S60500CH00
3/4"	S60700CH00
1"	S61000CH00
1-1/4"	S61200CH00
1-1/2"	S61500CH00
2"	S62000CH00
2-1/2"	S62500CH00
3"	S63000CH00
3-1/2"	S63500CH00
4"	S64000CH00



Face Bushing

Nominal Size	Cat Number
3/4" x 1/2"	S60700FB05
1" x 1/2"	S61000FB05
1" x 3/4"	S61000FB07
1-1/2" x 1"	S61500FB10
1-1/2" x 1-1/4"	S61500FB12
2" x 1-1/2"	S62000FB15
1-1/4" x 3/4"	S61200FB07
1-1/4" x 1"	S61200FB10
2" x 1"	S61500FB12
2" x 1-1/4"	S62000FB12

Threaded Rod

Nominal Size	Cat Number
Various	S60000TR00



CONDUIT ACCESSORIES

Industries We Serve

Calbrite™

UL-Listed
Type 304
and
Type 316
Stainless
Steel



Stainless steel's resistance to corrosion and staining, low maintenance, and familiar luster make it an ideal conduit material for many commercial applications. The most commonly used stainless steels are the iron-chromium-nickel alloys, Type 304 and Type 316.



The low life-cycle costs, natural corrosion resistance and toughness of Type 304 make it the number one stainless steel in commercial use. Type 316 stainless steel offers even greater resistance to caustic and corrosive conditions in industry environments such as waste treatment, food processing, mining and where extreme temperatures are present.



Cal Conduit's standard polished **Calbrite™** finish on all of its products improves corrosion-resistance and inhibits pitting or other blemishes that can damage the steel's natural protective film.

All of our SS products are UL 6A listed, and UL 514A and 514B listed or compliant.

INDIANA - Hammond
2207 165th Street
Hammond, IN 46320
219 844-6800
800 536-2248

CALIFORNIA - Downey
Corporate Headquarters
9650 Washburn Road
Downey, CA 90241
562 803-4388
800 225-7473

CALIFORNIA - Los Angeles
515 E. 88th Place
Los Angeles, CA 90003

Food Production & Distribution

Dairy Products Processing

Water & Wastewater Treatment

Pharmaceuticals & Cosmetics

Beverage Production & Distribution

Industrial & Lab Clean Rooms

Petrochemical Operations

Refining & Extraction Sites

Hospital & Medical
Equipment

Marine & Coastal
Facilities

Architectural &
Structural Uses



Calbrite™ is part of the
Cal Conduit Products'
Corrosion Buster Team!

Cal Conduit Products

VISIT US AT WWW.CALCONDUIT.COM

Copyright © 2007
CAL CONDUIT PRODUCTS
all rights reserved